



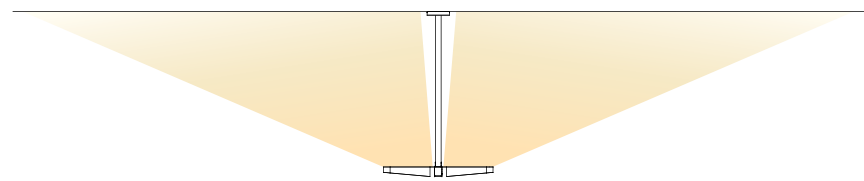
Angle

a·light

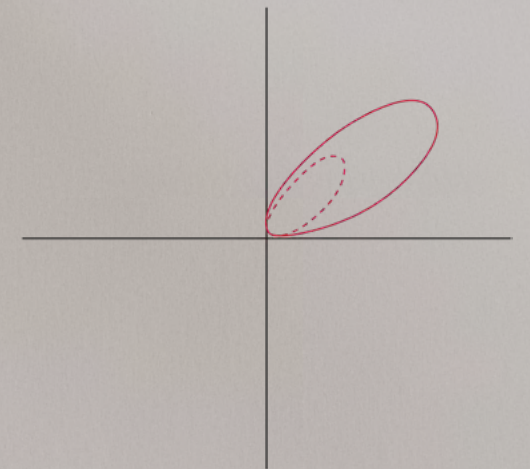
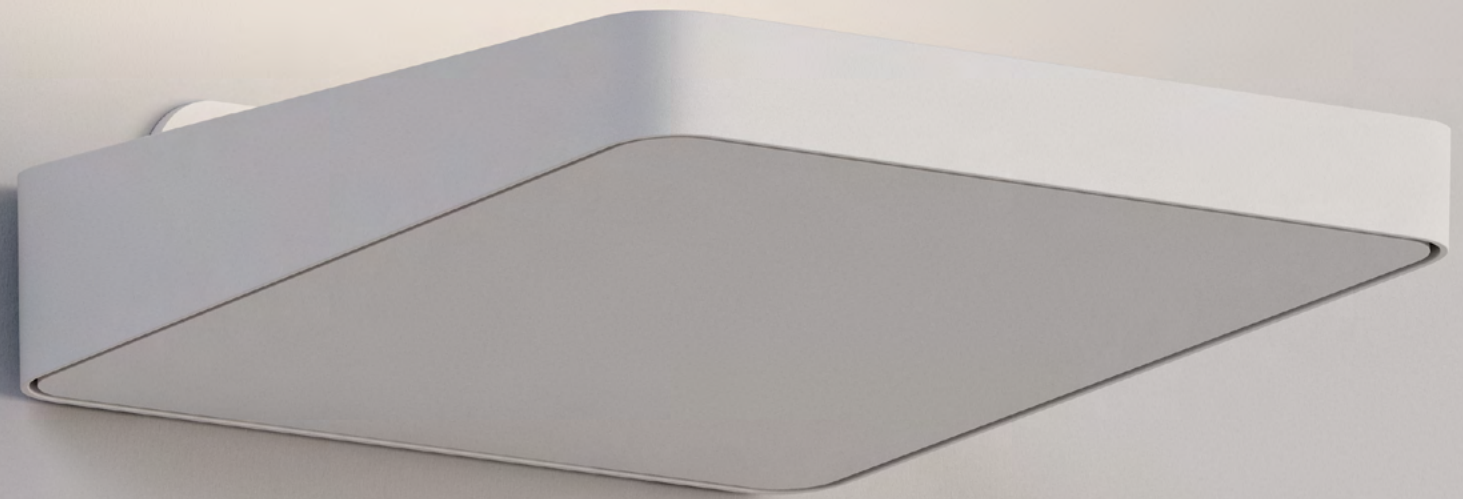
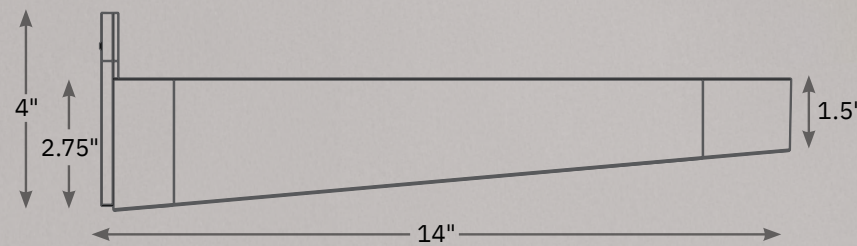
Outperforming design

Angle is about tailored performance in a sleek design. Advanced optics deliver controlled, efficient lighting that belies its slim profile.

The high-performance luminaire features an indirect asymmetric distribution and delivers up to 49,886 lumens depending on options selected.



Even and far-reaching light projection across the ceiling



Asymmetric throw

LUMENS: **12,151** lm/ft
INPUT WATTS: **101.8** W/ft
EFFICACY: **119.4** W/ft



Reach new (ceiling) highs

With a high output, Angle is designed for large spaces such as airports, transit stations and sports centers.

Subtle integration

Angle's sleek design enables it to elevate a space – subtly. It brings a soft, high output with uniform asymmetric distribution to a space while integrating seamlessly into the architecture.



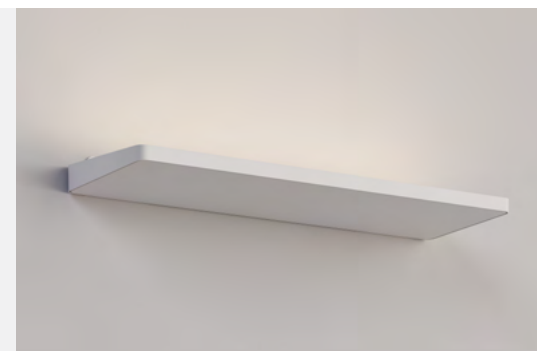
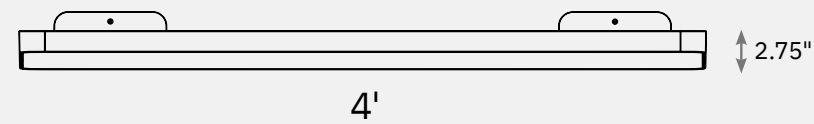
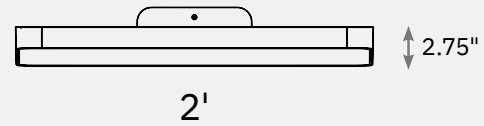
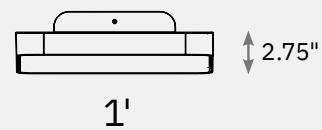
An array of possibilities

Multiple mounting options – surface, pendant, and dual pendant – allow a uniform design aesthetic throughout a project. Each mounting option can be specified in 1', 2' or 4' lengths to meet

Surface

Pendant

Dual Pendant



Designed for style

Standard finishes include white,
titanium and black colors.*



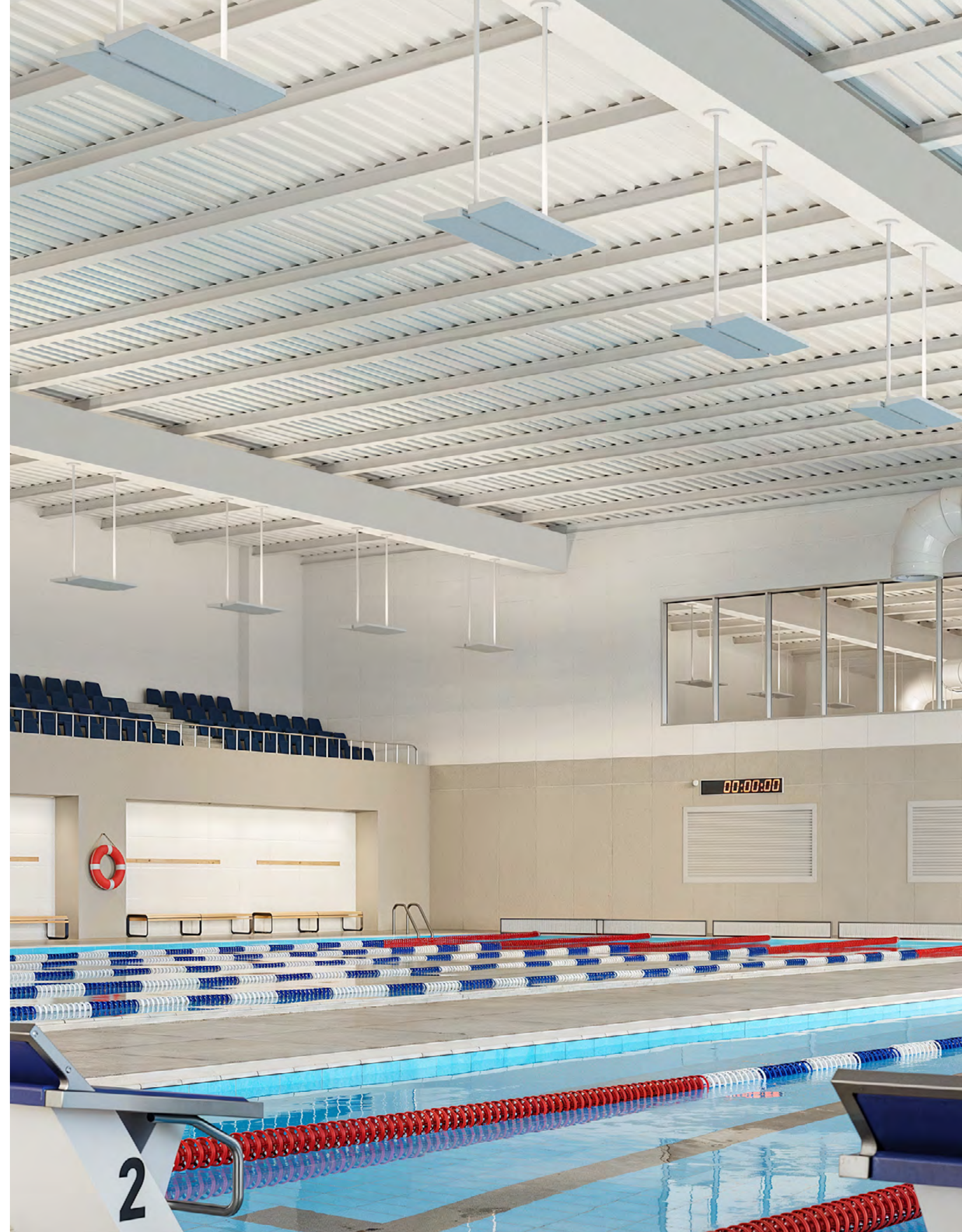
*Contact A-Light's Customer Care team
for custom finish options.



Dive in

Angle luminaires are suitable for wet locations. Each luminaire features a natatorium-rated finish on the body to ensure longevity in harsh environments.

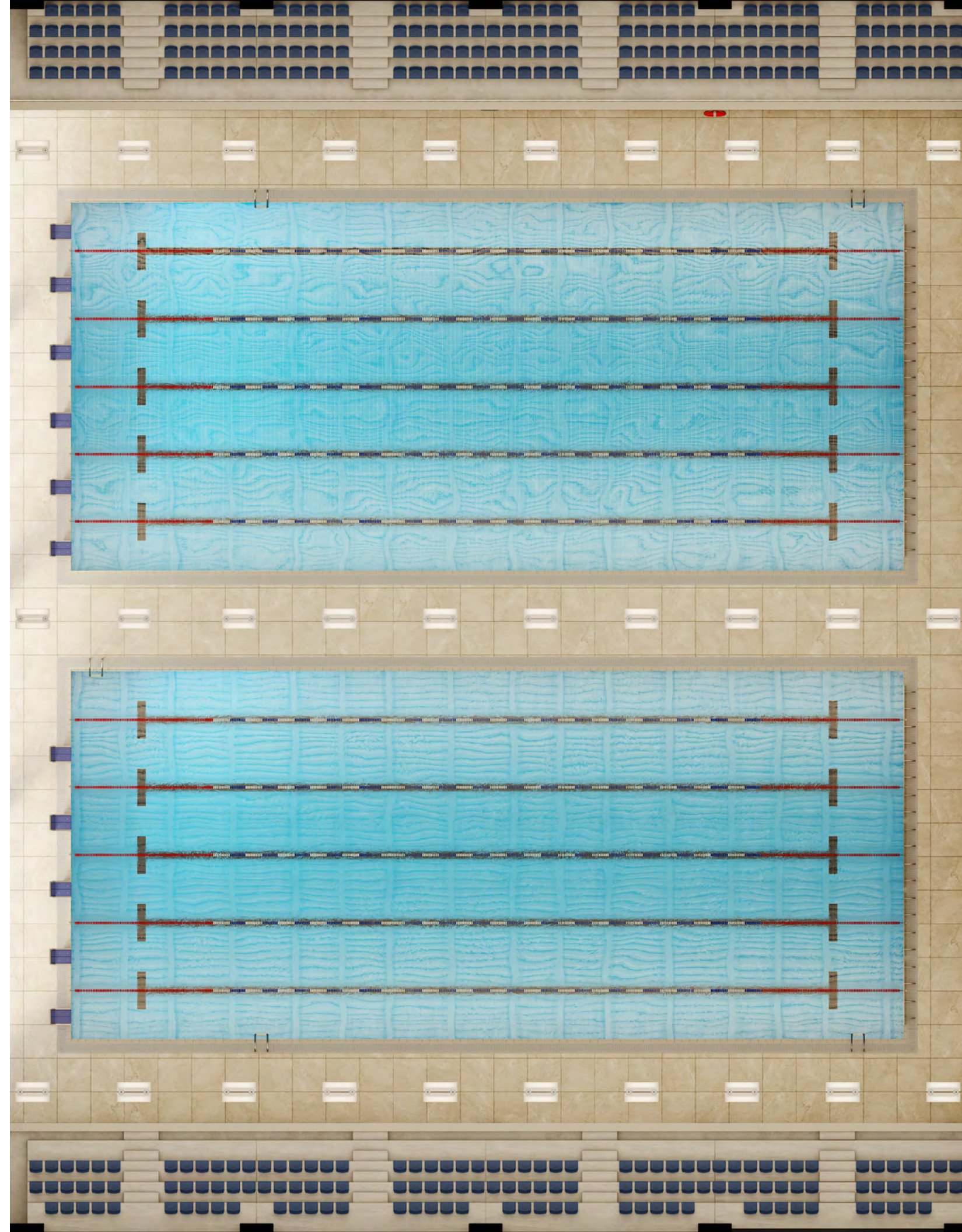
When specified for a natatorium, a clear cover is added on top of the luminaire to protect the optics, and gaskets seal the light engine from unwanted moisture.



Natatorium example

Angle can deliver 100 footcandle on pool surface which aligns with NCAA (National Collegiate Athletic Association) recommended best practices to ensure quality of light in the space.

Room dimensions	100' W x 150' L x 27.5' H
Fixture lumens	40,408 lm
LLF	0.95
Mounting height	20' A.F.F.
Target pool avg. illuminance	100 fc (NCAA)
Actual pool avg. illuminance	100.5 fc
Fixture spacing	9'
Fixtures per row	10
Distance between row	60'
Dual pendant 4' angle fixture quantity	30
Stem length	5'
Fixture reference code	ANG24LVH35CRIUD2P60BK



a·light

3728 Maritime Way, Oceanside CA, 92056
760-727-7675 | alights.com



© 2024 Acuity Brands Lighting, Inc



BUY AMERICAN

AcuityBrands